

Model: BPN-100-16A

Total Power	100 Watts
Input Voltages	90-264 VAC
Outputs	Single

SPECIAL FEATURES

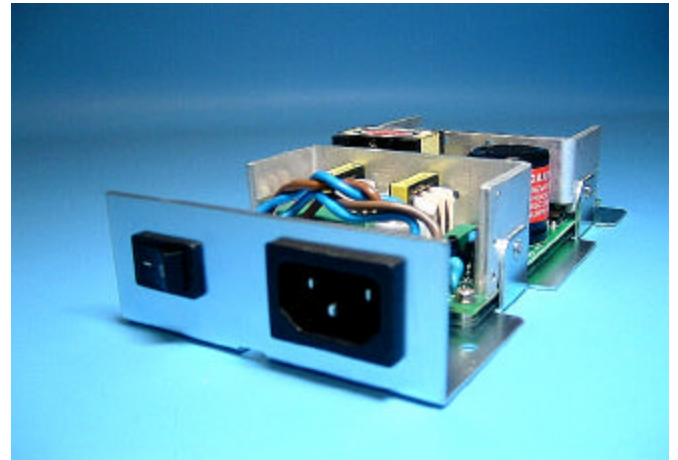
- Wide Range Input
- UL, CUL, CB scheme, Demko
- CE compliant
- Custom Modifications Available

ENVIRONMENTAL SPECIFICATIONS

Humidity: Up to 95% non-condensing
 Storage Temperature: -20° to +85°C
 Temperature coefficient: ±0.01% / °C
 Ambient Operating Temperature: 0 to +50°C continuous duty, full rating. Derate linearly to 50% of full rating at +71°C.
 Cooling: 9-CFM force air-cooling required

SAFETY APPROVALS

UL 60950
 CUL 60950
 DEMKO EN60950



VOLTAGE/CURRENT RATING CHART

Voltage	Minimum	Maximum	Peak
24V	0A	4.2A	4.2A

ELECTRICAL SPECIFICATIONS

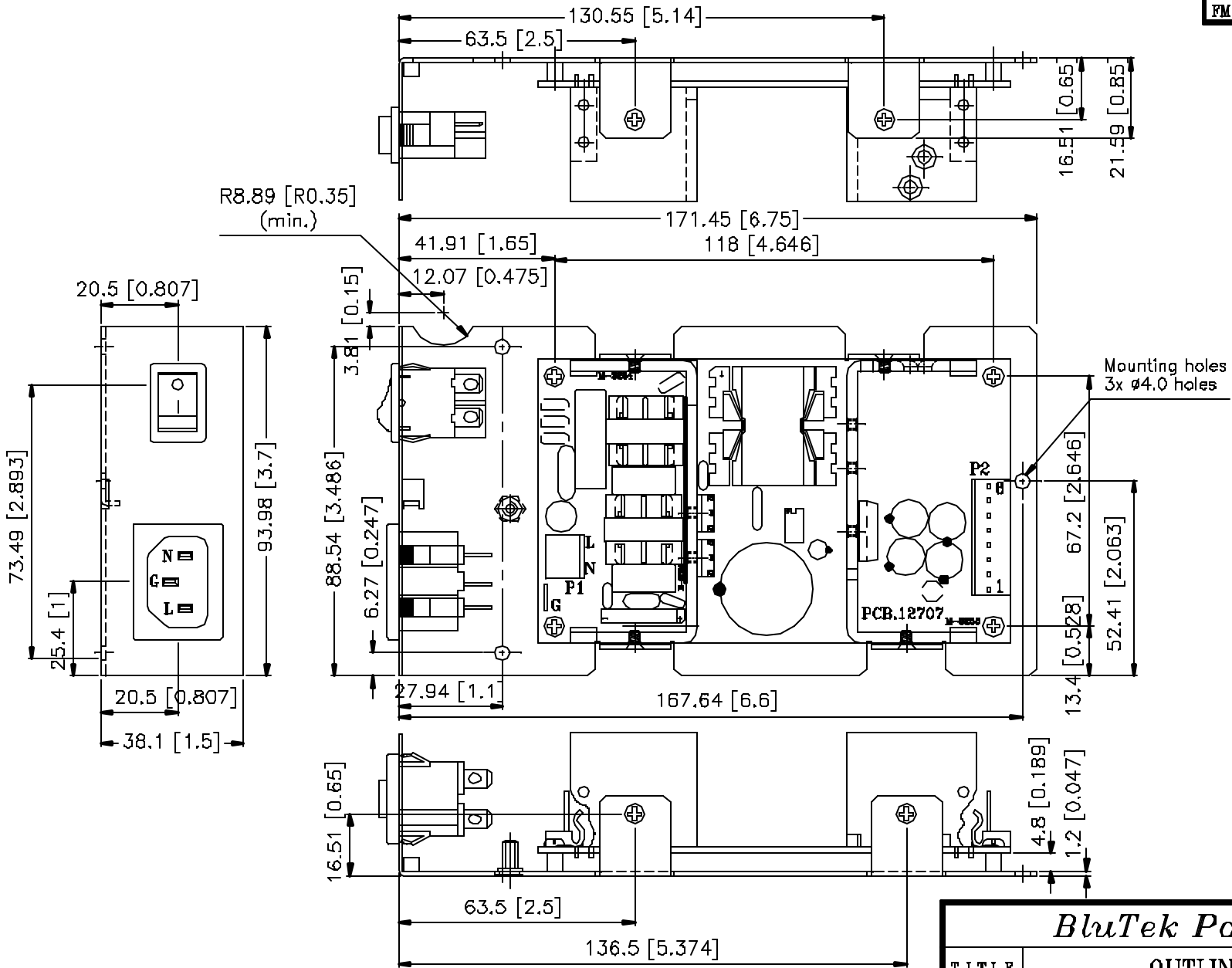
Input Specifications

Input Range.....90-264 VAC
 Frequency.....47-63 Hz
 EMI filter..... EN55022 Class B, FCC Part 15
 Inrush Current..... <30A @ 230 VAC
 Input Current..... 1.7A - 0.7A
 Isolation.....4242 VDC (Input to Output)
 Efficiency.....Typically 78% @ 120 VAC
 Switching Frequency.....65 KHz.

Output Specifications

DC Output.....Maximum continuous output power 100 Watts with 9-CFM fan cooling.
 Output Adjustment.....±10% via a voltage adjustment potentiometer.
 Line Regulation.....±0.5%
 Load Regulation.....±1.0%
 Ripple and Noise.....1% Pk to Pk

300-1 Route 17 South Suite B2
 Lodi, NJ 07644
 Phone: (973) 594-1800 Fax: (973) 594-1804
salesteam@blutekpower.com



BluTek Power

TITLE				OUTLINE DRAWING			
DRAWN		E. L. LIN		DRG. NO.		BLU-039	
CHECKED				MODEL NO.		BPN-100-18A	

UNIT	mm[inches]	REV. NO.	G	SCALE	0.7 : 1	MAT'L	t=
THIRD				TOL.	± 0.2	DATE	04. 01. 2004



MODEL NO. : BPN-100-16A

INPUTS :

ASSIGNMENT	A.C. VOLTAGE	CURRENT	PIN NBR
L:	100-240V~	1.7A	L
N:			N
GND:		50-60Hz	G

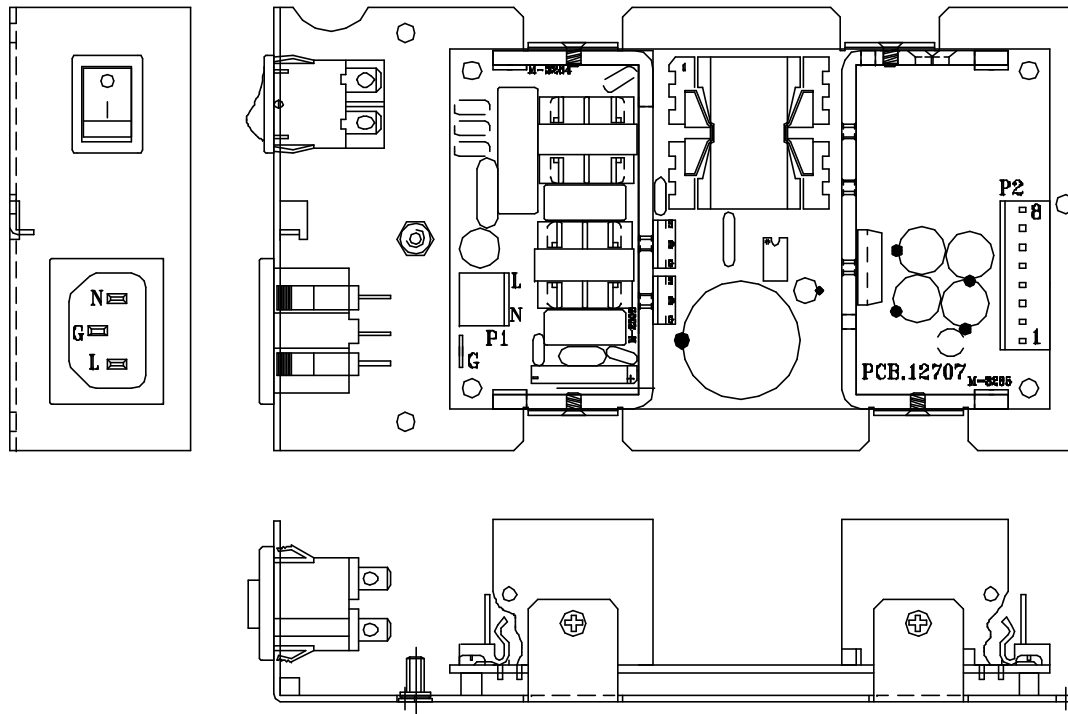
IN/OUTPUT RATING & PIN ASSIGNMENT

OUTPUTS :

ASSIGNMENT	D.C. VOLTAGE	CURRENT	PIN NBR
V01:	+24V ===	4.2A	P2-1, 2, 3, 4
DC COM:			P2-5, 6, 7, 8

MAXIMUM OUTPUT POWER: 100W

SIZE : A4	FM-4000-34/REV.A-080502'
UNIT : mm[inches]	FILENAME: PPSC0361
REV. NO.: B	DATE : 12. 01. 2005
DRAWN: 洪麗珍 L. J. Hun	CHECKED:



P2 = LCU P3060-08-S2
or Molex 5273-08A